



USER MANUAL

REBBE 125cc

Welcome to Wottan Motor

Dear owner: Congratulations on your choice of a REBBE 125 model and thank you for your trust in us.

In order to operate your vehicle safely and to keep it in perfect condition at all times, we recommend that you carefully read the instructions in this manual and follow the stipulated maintenance procedures. We are confident that WOTTAN MOTOR will repay the trust you have placed in us.

We would like to remind you that only WOTTAN service technicians are trained and have all the up-to-date information and tools to provide you with excellent service according to the specific needs of your new vehicle.

The entire Wottan motor team is constantly working to update and improve the product. Therefore, some of the information in this manual may be altered and modified without prior notice.

The manufacturer declines responsibility for any damage to the unit because of accessories not approved by the manufacturer.

TABLE OF CONTENTS

Introduction..... 4

SECURITY INSTRUCTIONS

Security check..... 6
Safe driving recommendations..... 9
Running-in 14

VEHICLE IDENTIFICATION

Vehicle identification..... 16
View from the right side..... 18

CONTACT LOCK

Operation 20

DASHBOARD

Elements..... 22

GENERAL VIEW

Instrumentation left handgrip 26
Instrumentation right handgrip..... 26
Fuel tank cap 27
Gear lever 28

STANDS

Side stand 30
Exhaust system..... 31

DRIVING INSTRUCTIONS

Braking..... 32
Basic concepts for safe driving 34

MAINTENANCE INSTRUCTIONS

Maintenance and cleaning 40
Wheel rims and storage 42
Technical changes, accessories and spare parts 44
Engine oil 45
Air filter 48
Tyre condition..... 49
Battery..... 50

TECHNICAL DATA

Engine..... 52
Transmission and chassis..... 53
Lubricants and operating fluids 54
Electrical equipment 54
Dimensions and weight 55

BOOK MAINTENANCE

Warranty..... 58
Wear parts list 60
Exclusions 62
Inspection plan 68
Maintenance table 70
Revision table 72

INTRODUCTION

WOTTAN MOTOR has designed, tested and produced this motorbike using the most advanced technology in order to offer you a safe and enjoyable ride to provide you with a pleasant and safe ride.

Your Wottan will provide you great moments of fun while being a practical, safe and economical means of transport. However, before using it, especially for the first time, please familiarise yourself with the information on this manual. Also, all the care and maintenance your Wottan requires is described in this manual. If you follow all instructions carefully, you will ensure a long service life for your motorbike. The Wottan Authorised Dealer and Service Network has experienced technicians capable of giving your motorbike the best possible service with the necessary tools and knowledge.

All information, illustrations, photographs and specifications contained in this manual are based on the latest production information. Due to Wottan's policy of continuous product improvement there may be some differences between this manual and your motorbike. Wottan reserves the right to make changes to its products at any time. Please also note that this Manual refers to all specifications of a particular motorbike model for any given country. Some details may vary from one country to another. Therefore, your model may differ from what is shown in this manual.

COPYRIGHT WOTTAN MOTOR, S.L.
January Edition 2023

This manual includes important instructions for the safety and handling of your motorbike.

Safety symbols and notes

The following must be observed:

WARNING

Precautionary measures against the risk of accident, injury and/or death.

RISK OF FIRE

The vehicle is equipped with a catalytic converter that causes extremely high temperatures in the exhaust system (fire risk).

NOTICE

Important instructions and precautions to avoid damage to the vehicle. Failure to observe these instructions may result in the voiding of the warranty.

NOTE

Special instructions for better handling during operation, inspection adjustments and service activities.

WARNING

This owner's manual contains important instructions for your safety and the operation of your motorbike. Please read it carefully, as careful driving in combination with regular care and maintenance helps to maintain the value of the motorbike and is one of the prerequisites for claiming warranty care.

Please be advised, of course, that it is neither practical nor possible to warn you of all the dangers associated with the operation, handling or maintenance of your vehicle. You must use your common sense.

SAFETY > SECURITY CHECK

Checklist

Before driving, perform a safety check using the enclosed checklist.

Take the safety check seriously. Perform proper maintenance before you start your journey. A technically fault free motorbike is a basic requirement for your safety and that of other road users.

Before you start your journey, check the following:

- Handlebars (smooth and easy to handle).
- Engine oil level
- Fuel quantity

- Front brake
- Rear brake
- Tyres (contour and pressure)
- Front fork
- Load distribution
- Lights
- Total weight
- Brake fluid level.

In the event of problems or difficulties, contact an authorised service point.

WARNING

Do not touch the starting system while the engine is running.

FIRE HAZARD

The vehicle is equipped with a catalytic converter, this causes extremely high temperatures in the exhaust system (risk of burns). Make sure that you are not in contact with flammable materials while driving or when stationary or parked!

WARNING

For your safety, only use original accessories or products approved and certified by Wottan Motor. WOTTAN MOTOR is not responsible for any damage caused by non-approved accessories.

NOTE

Our approved products and accessories are available at all authorised points of sale and in our website www.wottanmotor.com.

WARNING

- Do not exceed the maximum permissible weight. 150kg
- Check tyre pressure.
- Check rims.

WARNING

Before any journey, check the operation of all lighting components of the vehicle.

- Check that the headlights are clean.

SAFETY > SAVE DRIVING RECOMMENDATIONS

CAUTION

Safety is also largely determined by driving style.

Therefore:

- Put on an approved safety helmet and fasten it correctly.
- Wear appropriate protective clothing.
- Use foot rests.
- Do not drive if your driving ability may be compromised (in ice, rain or strong wind).

Your reactions can be severely affected, not only by alcohol, but also by drugs and medicines, do not drive under the influence of either.

- Strictly observe all traffic regulations.
- Always adapt your driving speed to the traffic and road conditions.

On wet roads or in the presence of loose gravel, be aware that your stability and braking power are limited by the grip of the wheels on the road surface and the distance may be greater.

Drive economically and be environmentally friendly

Fuel consumption, environmental pollution and wear and tear on the engine, brakes and tyres depend on a number of factors.

At idle, the engine needs time to warm up to an optimal operating temperature. However, in the warm-up phase, pollutant emissions and the level of wear and tear are very high. Therefore, it is best to start driving immediately after starting the engine gently and without forcing the engine until it reaches optimum operating temperature.

Avoid hard acceleration

Moderating the use of the accelerator to what is strictly necessary reduces fuel consumption as well as pollution and wear levels.

Drive as smoothly as possible and anticipate manoeuvres as much as possible.

Hard acceleration and braking cause high fuel consumption and increased pollution levels.

Wet brakes

Washing the scooter or driving through water or rain can delay the braking effect due to wet or (in winter) icy brake discs or pads.

WARNING

Caution braking distances increase exponentially when the brake discs are wet.

CAUTION

On roads salted by de-icing.

When driving on roads on which salt has been deposited, full braking performance may be compromised.

Oil and grease**WARNING**

Brake discs and pads must be free of oil and grease!

If the motorbike is not to be used for a while, a layer of rust may form on the brakes and thus increase the braking effect. A thick layer of rust can cause the brakes to lock. When riding after a period of non-use, carefully apply the brakes several times until they function normally. Also, during the first 500 km of the unit as well as when changing discs or pads there is an adaptation period during which the components adjust and gradually increase their efficiency.

Dirty brakes

When driving in less than optimal road conditions (mud, rain, oil, grease, etc.), the braking system's capacity may be reduced.

WARNING

In these circumstances use the brakes with caution until they are clean, the braking distance may be increased. Pad wear increases with dirty brakes!

NOTE

Be sure to practice braking for emergency situations, but do so in a situation that will not put yourself or others at risk.

Turn off the engine if you are going to be stopped to save fuel.

Different driving conditions affect fuel consumption. The following are unfavourable for fuel consumption:

- High traffic density, especially in large cities with many stops and traffic lights.
- Short, frequent journeys with constant starting and stopping of the engine.
- Driving in traffic jams with slow and dense traffic.

Plan journeys in advance to avoid heavy traffic.



SAFETY > RUNNING-IN

Running-in instructions for engine and transmission

CAUTION

Excessive engine speed during the running-in period increases engine wear and reduces engine life by up to 50%.

Any engine faults during the running-in period must be reported immediately to an official service centre.

NOTE

During the running-in period, drive smoothly but vary the engine speed frequently. Select winding roads with some hills. Constantly avoid driving at very low revs and also avoid accelerating the unit to the limit.

- For the first 500 km: Use less than half the throttle range.
- After 1.000 km: Use less than $\frac{3}{4}$ of the throttle range.

CAUTION

The first inspection should be carried out immediately at 500 km or 4 months (whichever comes first).

You can save delays by making an appointment with an authorised service agent in advance.

Running-in of new tyres

CAUTION

New tyres have a smooth surface. Therefore, they should be roughened by rolling them carefully and smoothly in various inclined positions.

Only then will the surface get its full grip!

Running-in of new brake pads

WARNING

New brake pads must be used and will not have their full frictional power until after 500 km of use.

The effect of reduced braking power can be compensated by increased brake lever pressure.

During this period, avoid unnecessary heavy braking actions.

VEHICLE IDENTIFICATION

The vehicle has three forms of identification: nameplate, the chassis number and the engine number.

Nameplate

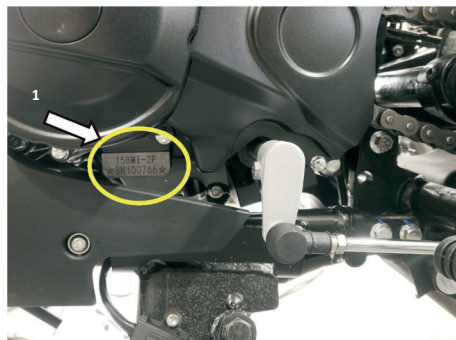
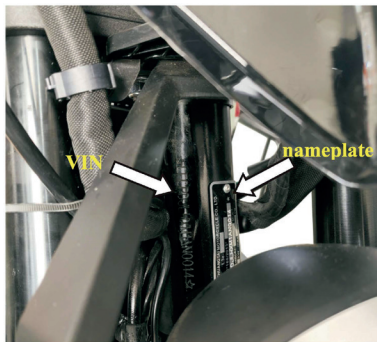
The metal nameplate is located on the right chassis tube and shows the main technical parameters, the manufacturer and the production date of the motorbike.

Chassis number

The chassis number (VIN) is located on the chassis up tube.

Engine number

The engine number (1) is located on the left side of the crankcase.



VEHICLE IDENTIFICATION > VIEW FROM THE RIGHT SIDE

1. Speedometer
2. Front brake lever
3. Ignition and steering column lock
4. Spark plug
5. Fuel tank
6. Air filter
7. Battery
8. ECU
9. Rear lights
10. Number plate light
11. Front right indicator lamp
12. Muffler
13. Engine
14. Rear right indicator lamp
15. Headlamp



LOCK > OPERATION

WARNING

Do not switch off the ignition while driving.

NOTES

Keys

With the motorbike you get two ignition keys indefinitely. Keep the spare key in a safe place.

NOTES

Position “” (OFF)

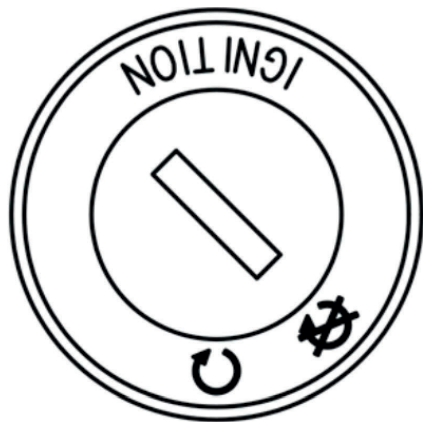
All circuits are switched off and the key can be removed.

Position “” (ON)

All ignition circuits are switched on and the engine can be started. The key cannot be removed in this position.

WARNING

Never turn the key to “OFF” when the vehicle is running. Otherwise, the electrical systems will switch off, which may lead to loss of control or an accident.



DASHBOARD > ELEMENTS



1. Main beam/high beam lamp

Illuminates when the main beam is on.

2. Left/right turn signal indicator lamp

Flashes when the left/right indicator is in use.

3. Engine lamp

Illuminates when there is an anomaly in the injection system. If this happens, slow down and take your vehicle to a Wottan Motor Service Centre.

4. Reserve warning lamp

When the fuel indicator (lower) is flashing. It means that you are using reserve fuel (about 1 litre). Immediately go to the nearest petrol station.

The scale with the pump symbol indicates the fuel level of the unit.

E = Empty

F = Full

Do not allow the fuel tank to run empty, as this may damage components and would not be covered under warranty.

Refuelling

- Use only premium unleaded fuel (min. 95 octane).

WARNING

Fuel is highly flammable and may explode. Do not smoke or bring any type of fire near the fuel tank.

Fuel expands under the influence of heat and sunlight. Therefore, never fill the tank to the top.

Never fill the tank while the engine is running.

5. Neutral warning lamp

This lamp illuminates when the transmission is in neutral position.

6. Total/partial odometer

The dashboard display has two functions: trip and total odometer. The trip odometer records the kilometres travelled on a section. The total odometer records the kilometres travelled since the motorbike was first used. The trip odometer can be reset to zero by pressing and holding the “ADJ” button and the “MODE” button at the same time when the TRIP odometer is displayed.

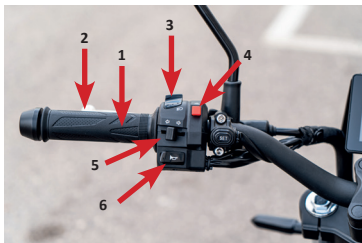
7. Tachometer (Revolution counter)

Indicates the rotational speed of the engine in number of rpm.

8. Speedometer

Indicates the cruising speed in km/h.

INSTRUMENTATION LEFT HANDGRIP



1. Grip handle

2. Clutch control lever

3. Light indicator

High beam or main beam



Low beam



4. "WARNING" button

5. Direction indicator

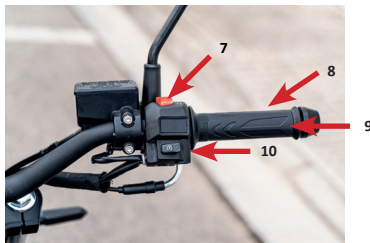
Left direction indicator. 

Right direction indicator. 


Press the button to switch off the indicator.


6. Horn 

INSTRUMENTATION RIGHT HANDGRIP



7. Engine switch

When the switch is in position  , the engine can be started

When the switch is in position  the engine cannot be started

8. Front brake lever

9. Throttle handle

10. Start button 

FUEL TANK CAP

Opening the fuel tank

To open the fuel tank cap, insert the key and turn it clockwise. The tank cap can then be removed together with the key. To replace the cap, align the arrow on the cap and press the cap, together with the key, into the hole in the tank cap until it clicks. Then, remove the key.

WARNING

Make sure that the fuel filler cap is correctly fitted before driving. Fuel leaks are a hazard to tyres.

WARNING

Do not overfill the tank. Never splash fuel on a hot engine. Fuel must not be left in the top of the tank, or the fuel may overflow when the temperature rises and expands, causing danger.

During refuelling, turn the engine off and turn the key to the OFF position.

GEAR LEVER

The motorbike is fitted with a 6-speed gearbox. The gear lever (1) is connected to a gear mechanism (gearbox). After selecting a gear, the gear lever returns to the initial position so that the next gear can be selected. Neutral gear is between first gear (down) and second gear (up). From the neutral position, push down on the gear lever to engage a low gear. Push the gear lever up for the other gears 2nd, 3rd, 4th, 5th, 6th.

Due to the gear mechanism, it is not possible to downshift two or more gears in one operation.

To shift from a high gear to a low gear (push the lever down) from a low gear to a high gear (push up), the "Neutral" position is between 1st and 2nd gear. To shift into neutral, stop the gear lever halfway between first and second gear.

WARNING

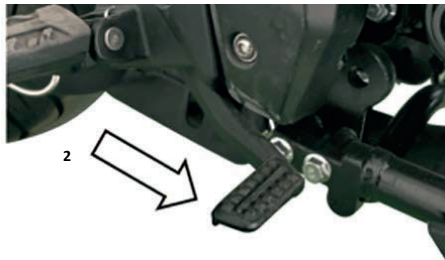
When the transmission is in neutral, the neutral indicator light illuminates on the dashboard.

Even though the light is on, be careful to release the clutch slowly to be sure that the transmission is in neutral.

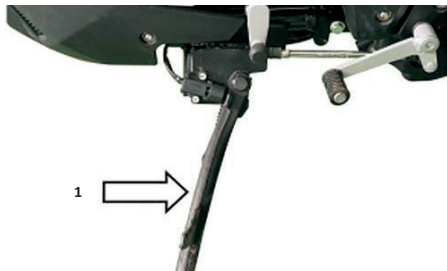
When engaging a low gear during high-speed driving, the clutch may cause a sudden increase in engine speed. Before engaging a low gear, reduce motorbike speed to avoid unnecessary wear on transmission system components.

Rear brake pedal (2)

Press this pedal to apply the rear wheel brake, and the brake indicator light comes on.



STANDS > SIDE STAND



Side stand

WARNING

Always make sure that the motorbike is standing on firm ground and is not inclined. Do not use the side stand on slopes as it may fold and the unit may fall to the ground.

It is essential that the side stand is folded down before starting, it has a safety system that prevents the unit from being started with the side stand open. Risk of accidents!

NOTE

The motorbike is equipped with a side stand switch. -If the stand is extended, the engine switches off and will not start.

- Before unfolding the side stand with your left foot the engine must be switched off.

- Once the side stand is extended (1) Slowly tilt the motorbike to the left until the weight is fully on the stand.

On poor road surfaces, in windy conditions or for prolonged parking only the centre stand should be used.

EXHAUST SYSTEM



The exhaust system is hot after use. To avoid the risk of fire or burns:

- Do not park the vehicle near potential fire hazards, such as grass or other materials that catch fire easily.
- Park the vehicle where pedestrians or children cannot touch the exhaust system.
- Make sure the exhaust system has cooled down before performing any maintenance work.

- Do not let the engine idle for more than a few minutes. Prolonged idling can cause heat build-up.

DRIVING INSTRUCTIONS > BRAKING

Disc brakes with combined braking system (CBS) are available.

The Combined Braking System (CBS) means that when the rear brake pedal is depressed, the rear brake and front brake operate at the same time. This system allows the rider to use only the rear brake more safely. Of course, in case of emergency, the rear and front brake must be used at the same time, which ensures sufficient braking force.

Correct brake function is very important for safe driving. Be sure to have your brake system regularly inspected by a qualified dealer.

WARNING

The brake is related to personal safety and must be maintained in good condition.

For the brake, the distance from the natural state to the braking action is known as “free travel”.

The front brake is a disc brake, the brake lever free play measured at the lever bracket should be 2-5,0 mm (0,08-0,10 inches).

The hydraulic brake system must be checked every day, as follows:

1. Check the front wheel brake system for leaks.
2. Check for any leaks or cracks in the oil pressure pipe.
3. The front brake lever must have a certain spring force backwards.
4. Check the state of wear of the front wheel brake linings.



BASICS FOR SAFE DRIVING

Before driving, be sure to carefully review the following points. Never ignore the importance of inspection.

WARNING

If this is your first time riding this type of motorbike, it is advisable to practice riding in private or lightly trafficked areas until you are completely familiar with the handling and operation of the motorbike.

Before riding, make sure that the side stand is returned to the raised position.

Do not make any gear changes or decelerations while riding.

Slow down to a safe speed before turning.

Do not downshift during turns.

It is dangerous to ride a motorbike with only one hand. While riding, hold the handlebars firmly with both hands and place your feet on the footrests. In any case, never release both hands from the handlebars.

On a wet road, the friction force is low and the braking and turning ability is also low. Therefore, slow down in anticipation.

Respect traffic laws and the speed limits.

Starting the engine

Make sure that there is sufficient fuel and that the engine cut-off switch is in the “↻” position. Insert the ignition key into the ignition switch and turn it to the ON position. If the transmission is in neutral position, the neutral indicator lights illuminates.

WARNING

Get into the habit of engaging neutral and firmly depressing the clutch lever before starting the engine. This can prevent the motorbike from rushing forward if the wrong gear is engaged.

Press the electric starter button for the ignition. Never twist the throttle grip when pressing the starter button.

Note

After starting the engine, immediately release the starter button to avoid adverse effects on the engine.

If the engine does not start after 5 seconds, wait 10 seconds before making another attempt to avoid damaging the battery.

A motorbike that has not been used for a long time and poorly atomised fuel can cause starting difficulties. In this case, do not twist the throttle grip, but repeat the start.

WARNING

Never run the engine in a room with little or no ventilation. This is because carbon monoxide gas is poisonous. Never leave the motorbike unattended with the engine running.

Caution

Do not leave the engine running for long periods of time without riding, or the engine may overheat causing damage to the internal parts or chrome plating of the exhaust system.

Starting the motorbike

Caution

Start the engine with the transmission in neutral, the clutch engaged and the rider in the normal riding position. normal riding position.

Press firmly on the clutch lever, wait a moment, press the gear lever to engage first gear, slowly roll the throttle towards you and gently release the clutch lever.

When the clutch is engaged, the motorbike will move forward.

To shift to a higher gear, first decelerate a little, release the throttle and, at the same time, press the clutch grip, move the gear lever to the next higher gear position and release the clutch grip, twist the throttle slightly. In this way, the highest gear can be engaged gradually.

NOTE

When driving at high speed, always avoid releasing the accelerator suddenly. It is advisable to wait a moment when the engine is running at 3000-5000 rpm before releasing the throttle completely. This can prevent the engine from shutting down due to abnormal combustion.

Use of the transformation device.

The gear device (gearbox) can ensure smooth operation of the engine within the normal operating range. The gear ratio is carefully selected for engine performance.

The driver should select gears appropriate to the general conditions, but should not use the clutch to control speed. To decelerate, shift to a low gear to allow the engine to operate in a normal speed range.

Caution

1. The engine speed must not be in the red range of the tachometer in any gear.

Driving on a gradient

2. To change from a high gear to a low gear, check the speed in a safe speed range before changing gear. Otherwise, sudden deceleration (sudden increase in engine speed) may occur. engine speed), which may result in gear shocks, wear of parts or vehicle imbalance. imbalance of the vehicle. This is dangerous.

Driving up a hill

- When riding up a steep hill, the motorbike may slow down due to insufficient power. Then immediately shift down to a lower gear to allow the engine to operate in a normal power range. Be careful to shift gears quickly to maintain proper motorbike momentum.
- When descending a hill, use the engine to brake by downshifting to a lower gear.
- Keep in mind that you should never go downhill too fast. Never let the engine run at too high a speed for too long. Use of the brake and parking method.

Turn the throttle twist grip outwards to close the throttle completely.

At the same time, apply the front and rear brakes with even forces.

Use the gear lever to reduce speed.

When the motorbike is stopped, press firmly on the clutch lever, shift into neutral and watch the neutral indicator to ensure that the motorcycle is in neutral. observe the neutral indicator to ensure that the gear is engaged.

WARNING

The faster the vehicle is driven, the greater the braking distance. Be sure to calculate correctly calculate the distance between your motorbike and the vehicle or object in front of you to ensure adequate braking.

An inexperienced driver always uses the rear brake only. This will lead to premature wear and too long a braking distance.

It is dangerous to use only the front brake. This can cause skidding and uncontrolled driving. On wet roads or other dull surfaces and during turns, be very careful to apply the brake smoothly.

It is very dangerous to brake violently on a rough or dull surface.

The motorbike should be parked on stable, level ground.

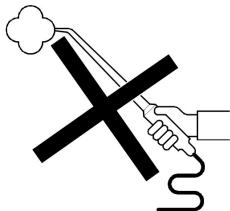
To park the motorbike on a gentle hill using the side stand, engage first gear to prevent the motorbike from sliding off the stand. Remember to shift into neutral before starting the engine.

Turn the ignition switch to the OFF position to turn the engine off.

Remove the key from the ignition switch.

Lock the steering for safety.

MAINTENANCE INSTRUCTIONS > MAINTENANCE AND CLEANING



NOTE

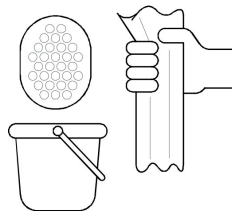
Your service point will normally help you to keep your unit in perfect condition.

Adherence to the maintenance schedule is a condition of maintaining the vehicle warranty.

The plastics and upholstery of the unit can be damaged by corrosive and penetrating cleaning agents or solvents and are not covered under warranty.

WARNING

Always perform a brake test after cleaning and before starting a journey!



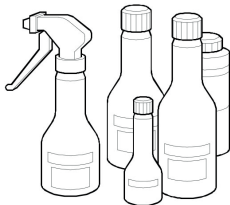
CAUTION

Do not use steam jet or high pressure washer guns!

Such devices can damage the optics, dashboard, hydraulic braking system and electrical system and its components. The use of pressure washers (no matter how high the pressure) voids the vehicle warranty immediately.

CLEANING

- To clean the motorbike, use a soft sponge and clean water
- Then dry with a cloth or chamois.



-Do not wipe off dust or dirt with a dry cloth, to avoid scratching the paintwork and metal or plastic parts.

When necessary, the motorbike should be preserved using commercially available cleaning and preserving agents.

As a precaution, (especially in winter), care for parts susceptible to corrosion with anti-rust products.

CAUTION

Never use paint polish on plastic parts.

- After a relatively long journey, carefully clean the chassis and the metal parts and protect them with an anti-corrosion agent.

Winter operation and corrosion protection.

NOTE

Protect the environment by using only environmentally friendly preservation agents, use them sparingly.

Use of the motorbike in winter can cause considerable damage due to salt.

CAUTION

Do not use hot water, which will increase the corrosive effect of salt.

Care for parts susceptible to corrosion with an anti-corrosion agent.

MAINTENANCE INSTRUCTIONS > WHEEL RIMS AND STORAGE

Wheel rim maintenance

If the motorbike is not used for a long period of time, it is recommended that the motorbike be supported on the centre stand so that its weight does not rest on the tyres.

You can prevent tyres from hardening and cracking by spraying them with a silicone rubber treatment.

First, clean the tyres thoroughly.

Do not store the scooter or tyres in hot spaces (such as a boiler room) for long periods of time.

WARNING

Remember to check the minimum tyre tread depth and avoid reaching the safety marks.

A minimum tyre tread depth of 2.0 mm must be maintained at all times. For your safety, it is advisable to change tyres when they show signs of wear and/or when the tyre compound becomes harder as it has lost grip properties.

Storage

- Clean the motorbike.

- Remove the battery.

Observe the maintenance instructions.

- Rub the shiny/chrome-plated parts with acid-free grease or anti-corrosion oil.

- Store the motorbike in a dry room and support it with the centre stand.

NOTE

If you are in doubt about the proper conditions for long term storage of your unit, consult an authorised service agent.

Start-up

- Remove any external preservation agents.
- Clean the motorbike.
- Fit the charged battery.
- Preserve the battery terminals with terminal grease.
- Check/adjust tyre pressure.
- Check brakes.
- Perform activities according to inspection plan.
- Perform safety checks.

MAINTENANCE INSTRUCTIONS > TECHNICAL CHANGES, ACCESSORIES AND SPARE PARTS

WARNING

Unauthorised technical modifications may result in the cancellation of the EC homologation.

Wottan Motor S.L. accepts no responsibility for modifications made to the unit or for accessories that are not approved and distributed by the network of authorised technical services.

Modifications and/or the installation of accessories not authorised by Wottan Motor S.L. may result in the loss of the vehicle's Warranty.

CAUTION

We recommend using only original accessories and spare parts for our motorbikes.

This is in your own interest: the safety, suitability and reliability of these accessories and parts will have been tested specifically for the motorbike.

Although we monitor the market, we cannot evaluate or be responsible for the quality of unapproved

accessories and parts, even if they have a certificate of acceptance from an officially recognised technical homologation agency, or a licence issued by the authorities.

For certified accessories and original spare parts, please consult an authorised service centre, an updated list is available on our website: www.wottanmotor.com.

MAINTENANCE INSTRUCTIONS > ENGINE OIL

(See periodic maintenance table)

Use high quality 4-stroke engine oil to prolong engine life. The engine oil must be an SG or SJ product in the API classification. API.

The engine oil must have the appropriate viscosity according to the local air temperature. according to the local air temperature. There are three levels viscosity levels suitable for the engine, namely, SAE15W-40, SAE10W-30 and SAE5W-30.

The SAE15W-40 4-stroke lubricant is recommended. SG or SJ level lubricant is recommended.

NOTE

The lubricant should be replaced after 1000km or approximately one month the first time, then every 3000km thereafter. every 3000km thereafter. The oil volume is 850 ml for the replacement or 1300 ml after overhaul.

The quality of the engine oil is an important factor affecting the service life of the engine. Replace the engine oil according to the maintenance period indicated in the maintenance table. When driving in dusty areas, the engine oil should be replaced more frequently than stipulated in the maintenance table.

Reason:

During cold weather, it is advisable for the user to use high quality lubricating oil for low temperatures. SG 10W-30 or SF 5W-30 recommended. For temperatures below -35°C, the use of API SG or higher class 5W-30 lubricant of note. brand is recommended. recommended. Warning:

Inferior lubricant may cause unrecoverable engine losses and seriously shorten engine life.



CAUTION

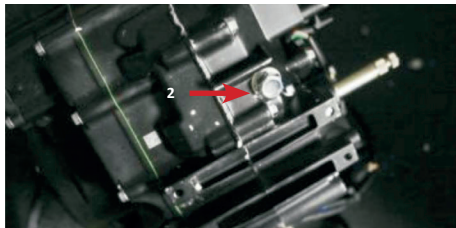
Checking the oil while the engine is cold can lead to an erroneous measurement. In order to avoid engine damage, never exceed the maximum oil level or go below the minimum level.

NOTE

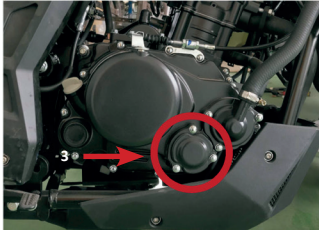
Make sure that the motorbike is kept level in all respects. During oil level checks even the slightest tilt to the side will result in measurement errors.

- The measurement is taken when the engine is hot (keep an eye on hot spots so as not to burn yourself).

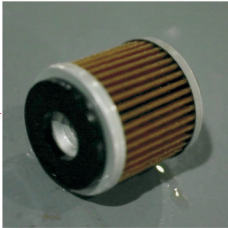
- Place the motorbike on the centre stand.
- Remove the oil plug from the dipstick (1) (located on the lower right-hand side of the oil sump).
- Remove the drain plug (2) from the strainer cover on the bottom of the engine to drain the oil.



- Remove three screws from the filter element cover (3).
- Remove the filter element cover, remove the oil filter element and replace it with a new one (5).



5 →



Caution

Insert the opening part of the oil filter element into the engine and check that the element is securely installed.

- Before reinstalling the filter element cover, check if there is any error in the installation of the oil filter element spring and o-ring.
- Install the filter element cover and tighten the nut. Do not overtighten the nut.
- Tighten the oil drain ring and fill fresh engine oil in the correct amount into the oil filler, before gently tightening the top cap.
- Start the engine and let it idle for several seconds.
- Switch off the engine and wait one minute before checking the oil level in the engine oil window. If the oil level is below the "F" line, refill until it reaches "F".

MAINTENANCE INSTRUCTIONS > AIR FILTER

If the air filter element is obstructed by dust, power output may be reduced and intake resistance may increase; fuel consumption will also increase. Therefore, the air cleaner element should be checked and cleaned every (see maintenance table), as indicated below.

Caution

If the motorbike is operated in dusty conditions, the air cleaner should be checked and cleaned more frequently than scheduled.

1. Remove the left-hand side kickplate.
2. Unscrew the screw on the outer air cleaner cover and remove the air cleaner sleeve.
3. Remove the foamed plastic sleeve from the air cleaner.
4. Separate the foam plastic from the outer frame.

Caution:

- When cleaning the filter element, check for damage to the filter element and replace it when necessary.
- Never start the engine without the filter element installed.

MAINTENANCE INSTRUCTIONS > TYRES CONDITIONS

Check tyre air pressure and tread pattern (see maintenance table). In addition to the regular check, make it a habit to check the tyre air pressure from time to time to ensure maximum safety and a long service life.

Tyre pressure

Low tyre pressure can intensify tyre wear and negatively affect driving stability, causing steering difficulties. However, tyre pressure that is too high can reduce the contact area between the tyres and the road surface, leading to wheel slippage and even spinning out of control. Tyre pressure should always be kept within the specified limit. Tyre pressure adjustment should be made when the tyre is cold.

Tyre tread pattern

When riding a motorbike with oversized tyres, riding stability is low and may become uncontrolled. When the front wheel tread depth is reduced to 1.6 mm or less, it is advisable to replace the clincher tyre. When the tread depth of the rear wheel is reduced to 2 mm or less, replace the tyre with a new tyre.

MAINTENANCE INSTRUCTIONS > BATTERY

WARNING

Always wear protective glasses when handling a battery.

Keep children away from acids and batteries.

DANGER OF EXPLOSION

A charging battery produces a highly dangerous explosive gas, so it is forbidden to smoke or otherwise cause incandescence in the vicinity.

FIRE HAZARD

Avoid generating sparks and electrostatic discharges when handling electrical cables and devices.

Avoid short circuits.

ACID CORROSION HAZARD

Battery acid is very caustic, so always wear gloves and safety glasses.

Do not tilt the battery as acid may leak from ventilation openings.

FIRST AID

If acid comes in contact with an eye, immediately wash the eye with cool water for several minutes. Then immediately call a doctor.

Acid on skin or clothing should be neutralized immediately with an acid neutralizer or soap, and stains should be rinsed off with plenty of water.

If acid is swallowed, go to an emergency room immediately.

CAUTION

Do not expose batteries to direct sunlight. Discharged batteries may freeze and should be stored in a place where the temperature remains above 5-15° C. Professional maintenance, charging and proper storage will increase the life service time of the battery.

WARNING

Take used batteries to an authorised collection point.

The battery must not be charged by fast charging.

The battery must only be charged using a special charger for motorbike batteries.

Charging the battery

Batteries are a wearing part. If it has not been used for a long time, its charge may have diminished. If the battery has not been properly maintained, it may have been rendered unusable.

The charging current (in amperes) must not exceed $1/10^{\circ}$ of the battery capacity (Ah).

The battery must not be charged quickly. The battery may only be charged with a special charger approved for MF batteries.

Maintenance

Although the battery does not require maintenance, never leave the battery discharged. Keep the battery clean and dry and make sure that the connection terminals are firmly in place.

TECHNICAL DATA

ENGINE	
Engine type	1P58MI-3
Construction	Single-cylinder, 4 strokes
Displacement	124,2 cm ³
Bore	φ58 mm
Stroke	47 mm
Compression ratio	12:01
Cooling	Liquid cooling
Max. net power output	10 kW at 8.750 rpm
Max. net torque	11.0 Nm at 8.000 rpm
Ignition system	Transistorised ignition system with electronic ignition control (ECU)
Spark plug	NGK CR9E
Fuel system	EFI
Idle	1200±180 r/min
Air filter	Air filter with element
Start system	Electric

TRANSMISSION	
Clutch	Oil-immersed multi-plate clutch
Transmission	Chain with gearbox, 6-speed
CHASSIS	
Motorbike version	C5-TR125 (REBBE 125)
Front suspension system	Convencional fork
Rear suspension system	Single shock absorber with swining arm
Front tyre	110/70 R 17
Rear tyre	150/70 R 17
Tyre pressures	One passenger: Front: 2,25 Bar Rear: 2,25 Bar
	Two passengers: Front: 2,5 Bar Rear: 2,5 Bar
Front brake	CBS disc
Rear brake	CBS disc

LUBRICANTS AND OPERATING FLUIDS	
Fuel tank capacity	14.5 litres
Fuel	Unleaded fuel min. 95 octane
Engine oil	SAE15W-40
Filling quantity	1300 ML
ELECTRICAL EQUIPMENT	
Battery	12V 7Ah gel battery
Fuse	20A
Headlamp	Low beam/High beam 12V 7.5W/8W
Position light	LED 12V 2.6W
Speedometer lights	LED 12V 0.1W
Indicator of control lights and high beam	LED 12V 0.8W
Rear position/brake light	LED 12V 2W/0.5W
Front/rear turn signal light	LED FR: 2 x 12V 1.5 W RR: 2 x 12V 2.2W

DIMENSIONS AND WEIGHTS	
Overall length	2.070 mm
Handlebar width	818 mm without mirrors
Maximum height	1.330 mm without mirrors
Wheelbase	1.425 mm
Seat height	810 mm
Wet weight	155 kg
Maximum speed	110 km/h

BOOK MAINTENANCE

* We inform you that your data will form part of a file owned by WOTTAN MOTOR S.L. and the Dealer and/or the Official Service, for opinion polls and statistical purposes, as well as to inform you periodically of new products and services, both by written and electronic means, and such information may be appropriate to your particular profile. In addition, your data may be communicated to other companies belonging to the automotive, financial and insurance sectors for the same purposes indicated previously. You may exercise your rights of access, rectification, cancellation and opposition to the processing of your data, as well as revoke your consent to the sending of electronic commercial communications, by sending an e-mail to central@wottanmotor.com, for processing carried out by WOTTAN MOTOR, S.L. or to the corresponding postal address of the selected Dealer and/or the selected Official Service.

WARRANTY

Warranty conditions

In the event of a malfunction occurring, Wottan Motor will provide the customer with warranty service through the authorised service agent within the scope of its statutory warranty obligations:

1. Within a period of 36 months after the date of registration of the motorbike, the company will rectify any deficiencies caused by component failures and/or manufacturing defects through the authorised dealer (dealer/service technician) by repairing or replacing the affected part in accordance with the legal warranty regulations. We may refuse the requested repair or replacement of the defective part if the failure was caused by negligent or improper use of the unit, or provided that the maintenance schedule has not been complied with, is exceeded by 20% of the maintenance schedule (either by time or mileage). Replaced parts become the property of the manufacturer.
2. The installation of spare parts within the scope of the warranty does not extend the warranty period that began with the date of delivery of the unit.
3. The warranty does not cover wear and tear caused by normal use, as well as wear and tear caused by improper handling and use. Rust and corrosion are caused by environmental influences and are also not covered by the warranty. Cosmetic defects, once the unit has been removed from the dealer after purchase, are also not covered by the manufacturer's warranty.

4. Warranty claims submitted by the customer will be rejected in the event of: manipulations to the motorbike, installation of a different exhaust system, modification to the gearbox or secondary transmission ratio, installation of accessories or spare parts that have not been approved by the manufacturer.

Repairs carried out in workshops not authorised by Wottan Motor and failure to comply with the maintenance intervals in the workshop at an authorised Service Point shall also result in the warranty being voided.

5. When submitting a warranty claim, the customer must present the maintenance booklet correctly completed by the seller.

6. The following table gives the customer an overview of the maintenance schedule prescribed by the manufacturer.

WEAR PARTS LIST

Wearing parts	Wear limits
Tyres, tubes, rims	Depending on driving style, load and tyre pressure, the wear limit can be reached after only 500 km or even earlier.
Wheels, hub bushing	Depending on driving style, load and tyre pressure, the wear limit can be reached after only 1500 km or even earlier. Check during every maintenance. Rust is a lack of maintenance!
Oils, air filter, inspection for engine leaks	During the first inspection, then at every service interval (every 3000 km/6000 km). Check the oil level before each trip.
Spring fork, spring strut	Cleaning / inspection during each maintenance.
Lamps, incandescent bulbs, electrical system. electrical system.	Depending on the road surface conditions/levels, the lifetime will be reduced, this may occur after 500 km.
Brake linings, brake pads, brake lines	Depending on the driving style and load, these can wear out after 1500 km or even earlier.
Pedal rings, sealants, gaskets	Must be replaced during each maintenance interval to ensure proper function.
Radial seals on engine, gearbox, fork and wheels	Depending on road conditions and care, wear may start after 500 km. Dirt reduces the life time. Do not clean at high pressure!
Wheel bearings, steering bearings	Depending on the road conditions, wear can start after 1500 km, soiling of the axle reduces the service life. Dirt on the hub reduces the service life. Check at every maintenance interval, do not clean at high pressure!
Swing arm bearing	Depending on load and care after 1500 km, check with every maintenance.
Wires	Depending on load and care after 1500 km, check with every maintenance.
Coatings	Plastic parts will be damaged by caustic cleaning agents, penetrants or solvents.

Wearing parts	Wear limits
Air filter, oil filter	At every service interval
Starter, batteries, fuses, starter wipers	Depending on the ambient temperature, failures are to be expected in the sixth month, even earlier if used for short journeys.
Mirrors	Depending on the ambient temperature and care, failures can be expected in the sixth month, in winter even earlier. Rust is a lack of maintenance!
Bowden cables, brake cables, accelerator cables	Depending on use and care, from 6th month onwards
Self-locking nuts, dowels, locking plates, screw connections	During each maintenance interval or after unscrewing the nut or unlocking the lock.
Variator, rollers, coils, belts	Depending on driving style and load, these can wear out after 500 km.
Clutch / friction discs	Depending on driving style and load, these may wear out after 500 km.
Pistons, cylinders, crankshaft, connecting rods, engine bearings	Depending on driving style, load and care, these parts can wear out after 200 hours. If you drive mainly at full throttle, even sooner.
Spark plug	With every second service interval.
Exhaust system, inspection of assemblies	Depending on use and care from the sixth month. In winter and short distance operation, even earlier. Rust is a lack of maintenance!

EXCLUSIONS

1. The following circumstances are excluded from the Wottan Motor Official Warranty:

- 1.1 Defect due to repair, adjustment, maintenance or any other operation outside Wottan Motor's specifications and/or outside its Authorised Service network.
- 1.2 Failure to have passed the inspections in accordance with the Wottan Motor Scheduled Maintenance Plan.
- 1.3 Defect caused by abnormal driving, participation in any type of competition or use outside traffic lanes, roads in poor condition or hostile areas.
- 1.4 Use outside the parameters set out in the User's Manual.
- 1.5 Damage caused by use as a rental vehicle.
- 1.6 Damage caused by the use of non-original spare parts, accessories, lubricants or other liquids not recommended.
- 1.7 Damage caused by transformation or modification of the vehicle and/or its components.
- 1.8 Damage caused by ageing or prolonged storage, in particular but not limited to changes in the colour of the paintwork, chrome plating, cracking of the paintwork or other deterioration.
- 1.9 Perceptual sensations that do not affect the performance and operation of the vehicle such as noise, vibrations, looseness, etc.
- 1.10 Consumable parts: spark plug, air filter, brake pads and shoes, brake discs, clutch system, variator, light bulbs, LED lighting elements, fuses, seals, rubber parts, drive belt, pinions, crown gears, transmission gears, tyres, inner tubes, oils, greases, hoses, cables, cable casings, grips and stickers.
- 1.11 Normal wear and tear resulting from use such as deterioration of the transmission kit, battery, saddle,

stands (side and centre).

1.12 Damage such as condensation or water seepage, rust, deterioration of paint, upholstery, stickers, logos or any type of malfunction resulting from the use of pressurised water (of whatever value).

1.13 Damage due to incorrect transport and/or storage.

1.14 Any mechanical intervention carried out by persons other than the official Wottan Motor services.

1.15 Damage caused by weather accidents, catastrophes, fire, collisions and/or traffic accidents, theft or damage resulting therefrom.

1.16 Damage caused by smoke, oil, chemicals, animal droppings, saline water, salt or other similar materials.

1.17 Damage caused by exposure to saline environments such as those found in coastal locations.

1.18 Damage resulting from wear and tear.

1.19 Any electrical problems or malfunctions caused by pressure washing equipment.

2. The Wottan Motor Official Warranty does not assume or cover the following:

2.1 Expenses resulting from periodic maintenance.

2.2 Costs of cleaning, inspection and/or pre-delivery assembly.

2.3 Expenses for the preparation of estimates for repairs that are not covered by the Wottan Motor Official Warranty.

2.4 Additional indirect costs of a breakdown such as crane, transport, communications, accommodation, per diems or any other type of additional costs.

2.5 Financial compensation for the period of maintenance and repair, whether or not they are covered by the Wottan Motor Official Warranty: loss of time, loss of business, loss of working days, expenses for rental vehicles, etc.

Parts that are replaced during the warranty period will be guaranteed for the remainder of the warranty period.

Any part replaced by another part will become the legitimate property of Wottan Motor, S.L. Wottan Motor reserves the right to introduce modifications or improvements to its vehicles in order to improve their operation and/or durability.

3. Observations for the owner

The first inspection of the vehicle after delivery is of the highest importance in order to guarantee the longevity of the vehicle.

The purpose of the first service is to carry out the necessary checks to ensure that the main components of the vehicle are perfectly adjusted after the start of the running-in period. This is also the time for the Wottan Official Service to carry out a dynamic test of the vehicle, as it is likely that some of the misadjustments will be imperceptible to the new owners.

4. The first obligatory inspection

We remind you that it is your sole responsibility to make sure that the first service is carried out within the established period in order to ensure the validity of the Wottan Official Warranty.

All Wottan vehicles, regardless of the Programmed Maintenance System they have according to their cylinder capacity, must undergo the first compulsory service after 500 kilometres or before the first 4 months (*).

(*). Mileage takes precedence.

Before collecting your vehicle after any service, make sure that your Wottan Agent or Official Dealer provides you with the corresponding bill showing the work carried out. Remember that this document will be the reliable proof that you are following the Scheduled Maintenance System and it will also add value to your vehicle if you decide to sell it at some point in the future together with the stamps in this Warranty and Maintenance Manual.

Failure to carry out the first service within the deadlines set out above will result in the automatic cancellation of the coverage and entitlement to the Wottan Official Warranty. Likewise, failure to carry out any of the periodic inspections described above may be grounds for refusal of the warranty.

5. Periodic inspections. Scheduled maintenance system

The periodic inspections described in the maintenance table in the vehicle's User's Manual are intended to ensure the perfect operation and long life of the vehicle.

In order to have a better knowledge of your vehicle, whenever possible, carry out maintenance operations or repairs at the Wottan Dealer or Agent where the vehicle was purchased.

The costs of periodic maintenance and servicing are the responsibility of the vehicle owner.

Make sure that you always receive the bill for the work carried out, as this will always be the proof that the maintenance has been carried out. Remember that recording these maintenance periods is important in order to enjoy the full benefits of the warranty.

Although there is already a wide distribution network for Wottan, which is also expanding all the time, we recommend that you have the maintenance carried out at the Official Dealer or Dealership where you purchased the vehicle, simply to keep track of the life of your motorbike and the conditions of use and your preferences as a customer in the case of components that can be adjusted according to the customer's tastes.

Always keep in mind that adherence to the Scheduled Maintenance System always has an impact on reducing overall maintenance costs.

If a vehicle failure occurs within the warranty period, please contact the Wottan Dealer or Agent where the vehicle was purchased, or the nearest one if this is not possible, and arrange a visit to carry out the necessary work.

Maintaining the cleanliness of the vehicle makes it easier for the Wottan representative's specialised personnel to locate anomalies and carry out interventions.

Remember that the scrupulous follow-up of the Programmed Maintenance System is the best guarantee of the resale value of your vehicle.

6. Vehicle care

Many possible faults that may occur, especially in the first few months of your Wottan's life, can be detected with a simple routine inspection. We recommend that you always carry out the inspection detailed in the User's Manual before using your motorbike. Here you can check and detect if mechanical elements such as levers, wheels, brakes, screws, etc. need adjustment and correct them. Keeping the vehicle clean also helps in detecting such maladjustments.

Never use chemicals or solvents to clean the vehicle that may affect or damage painted, treated or plastic parts. The best cleaning agent is neutral soap and plenty of water. For cleaning very dirty elements, there are many options available on the market for specific products. Never use pressurised water and certainly never spray water directly on locks, headlights, lights, turn indicators, clock, controls and switches, electrical devices or exhaust system.

Wottan Motor is constantly improving its products. Therefore, although this manual contains the most current information available at the time of printing, there may be slight differences between your vehicle and this manual. If you need any clarification regarding the information contained in this manual, please consult your Wottan Motor dealer or, if you prefer, contact Wottan Motor, S.L. Customer Service.

INSPECTION PLAN

Please note the following:

- During and after the warranty period, all inspections must only be carried out by a specialist dealer approved by us.
- Observe the inspection intervals and ask the specialist dealer to confirm them on the warranty certificate.
- Only use original spare parts.

CAUTION

In the event of non-compliance, the warranty will be void.

The activities carried out are listed in the inspection plan.

During the warranty period, the following inspection intervals must be complied with:

At 500 km or 4 months.

At 3.000 km or after 12 months from the first service.

Every 3.000 km or after 12 months since the last service.

After the warranty period, the inspection intervals specified in this manual must be applied as follows: Every 3.000 km or 12 months.

WARNING

For safety reasons, do not carry out separation or adjustment activities on the motorbike and chassis that exceed a strictly restricted range. Altering safety-related parts could threaten the safety of yourself and others.

This applies especially to the exhaust system, carburettor, ignition system, fork column, brake system and lights.

Before working on the electrical system, disconnect the negative terminal of the battery.

MAINTENANCE TABLE WOTTAN MODEL: REBBE

R = Replace

I = Inspection, cleaning and adjustment (replacement if necessary)

L = Lubrication

MAINTENANCE INTERVALS ARE PERFORMED ON A MILEAGE OR TIME BASIS, WHICHEVER COMES FIRST

COMPONENTS TO CHECK	500 km or 4 months	3.000 km or 6 months	6.000 km or 1 year	9.000 km or 1 year	12.000 km or 1 year	15.000 km or 1 year	18.000 km or 1 year	21.000 km or 1 year	24.000 km or 1 year
Air filter		I	I	I	I	I	I	I	I
Oil filter	R	R	R	R	R	R	R	R	R
Engine oil	R	R	R	R	R	R	R	R	R
Spark plug		I	I	R	I	I	R	I	I
Valve adjustment						I			
Throttle cable adjustment	I	I	I	I	I	I	I	I	I
Chain tension (L every 1.000 km)		I	I	I	I	I	I	I	I
Transmission leaks check	I	I	I	I	I	I	I	I	I
Checking crankcase leaks	I	I	I	I	I	I	I	I	I
Coolant (R every 2 years)				I			I		
Clutch cable tension		I	I	I	I	I	I	I	I
KIT Status		I	I	I	I	I	R	I	I
Bolts and nuts (engine)		I	I	I	I	I	I	I	I

MAINTENANCE TABLE WOTTAN MODEL: REBBE

R = Replace

I = Inspection, cleaning and adjustment (replacement if necessary)

L = Lubrication

MAINTENANCE INTERVALS ARE PERFORMED ON A MILEAGE OR TIME BASIS, WHICHEVER COMES FIRST

COMPONENTS TO CHECK	500 km or 4 months	3.000 km or 6 months	6.000 km or 1 year	9.000 km or 1 year	12.000 km or 1 year	15.000 km or 1 year	18.000 km or 1 year	21.000 km or 1 year	24.000 km or 1 year
Exhaust system (fasteners, silencer and manifold)	I	I	I	I	I	I	I	I	I
Fuel pipes		I	I	I	I	I	I	I	I
Check battery charge		I	I	I	I	I	I	I	I
Steering and bearings		I/L		I/L		I/L		I/L	
Front and rear suspension	I	I	I	I	I	I	I	I	I
Tyre pressure	I	I	I	I	I	I	I	I	I
Braking system		I	I	I	I	I	I	I	I
Brake fluid (replace every 2 years)			I		I		I		I
Main and side stands		I/L		I/L		I/L		I/L	
Bolts and nuts (rims, swingarm, fairing...)		I	I	I	I	I	I	I	I

Revision table

Each time the official dealer carries out a maintenance check, he must stamp and sign the corresponding record. Failure to carry out any of the recommended periodic checks will result in the loss of the warranty. The chart shows in km and time when the checks are due.

You should always check the vehicle according to whichever comes first (km or time).

VERY IMPORTANT to check the oil level every 500 km.

1st Service	500 km or 4 months from purchase.
2nd Service.....	3.000 km or 1 year from the previous service date.
3rd Service.....	6.000 km or 1 year from the previous service.
4th Service.....	9.000 km or 1 year from the previous service.
5th Service.....	12.000 km or 1 year from the previous service.
6th Service.....	15.000 km or 1 year since the previous service.
7th Service.....	18.000 km or 1 year since previous service.
8th Service.....	21.000 km or 1 year since previous service.
9th Service.....	24.000 km or 1 year since previous service.
10th Service.....	27.000 km or 1 year since previous service.

From the third service onwards, the service intervals will be every 3.000 km or 1 year, with the engine oil level to be checked every 500 km by the owner. If deemed necessary, WOTTAN MOTOR may reduce the interval between service intervals if it considers that the vehicle should be serviced.

The cost of labour and materials used in all servicing shall be borne by the customer.

